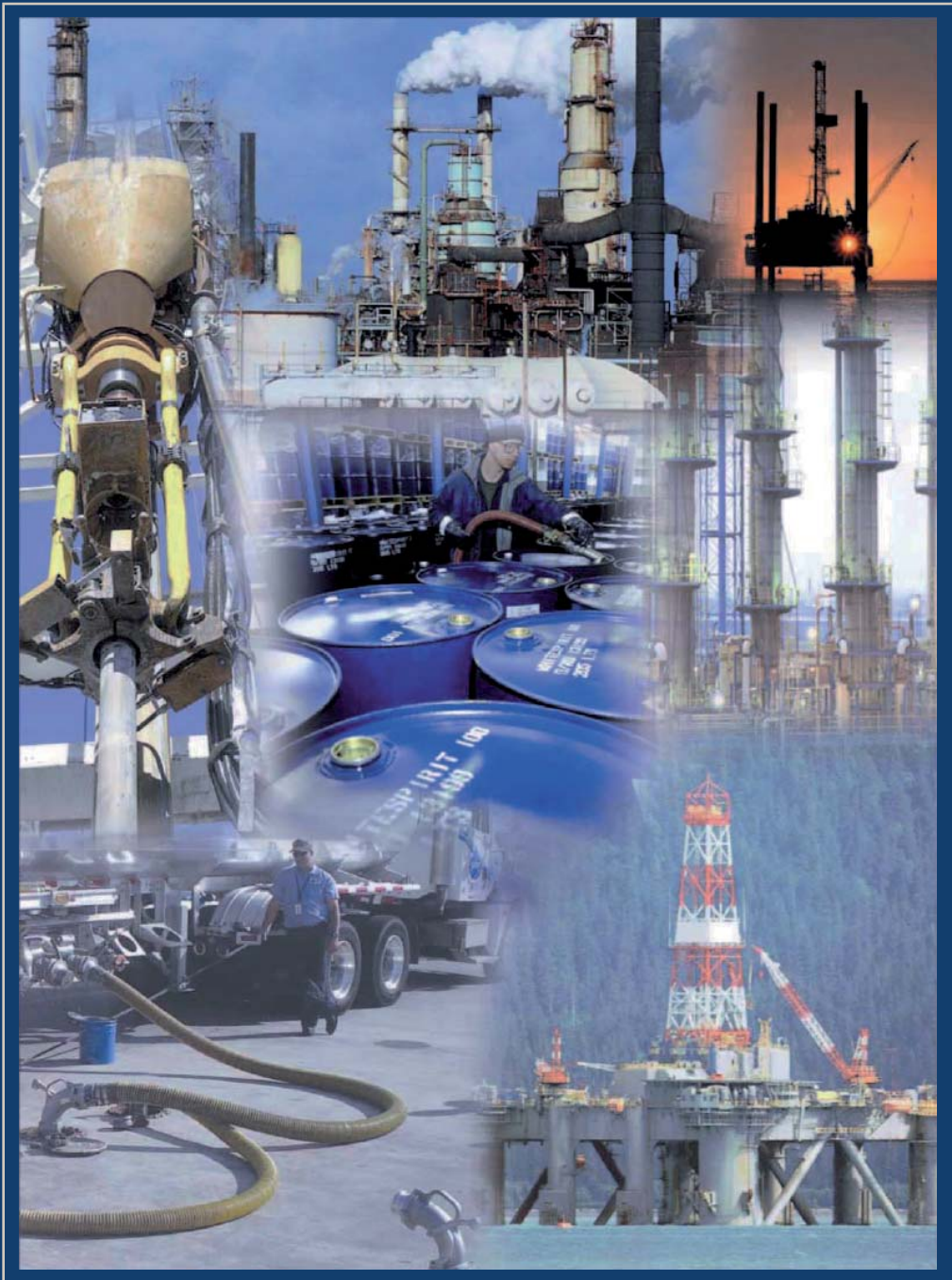


Oilfield Products

INCLUDES NEW
PRODUCT RANGES



The Right Connection™

Table of Contents

Rubber Hose	3 - 5
Composite / PVC Hose	6
Matallic / GSM Ball Joint Armoured Hose	7
Cam and Groove	8 - 11
Holedall	12 - 16
Claw Couplings	17 - 18
Boss Fittings	19 - 20
Dry Disconnect	21 - 22
Break-Away Couplings	23
Hydraulic Fittings	24 - 26
Valves	27 - 31
Refueling Nozzles.....	32
Hammer Unions.....	33
Swivel joints	34
Miscellaneous.....	35 - 36
Dixon Safety and Services.....	37 - 40

Hose Coupling Safety

- Use Dixon couplings, retention devices and accessory products **only** for their intended service.
- All recommendations of the Hose Manufacturer, and the Coupling Manufacturer, must be employed with regards to **Size, Temperature, Application, Media, and Pressure** when selecting the components for a hose assembly.
- All finished hose assemblies should be tested in accordance with the Rubber Manufacturers Association recommendations.
- All hose assemblies should be thoroughly inspected prior to each use to ensure they are undamaged, and properly coupled.
- Use safety clips on couplings, and King Safety Cables on assemblies where required by the manufacturer, as well as State and Federal regulations. (OSHA regulations may be viewed in full on the OSHA website, www.osha.gov.)
- Under no circumstances should the assembly working pressure or working temperature exceed the working pressure or working temperature of the lowest rated component (coupling, clamp, ferrule, or hose).
- Call Dixon (800.355.1991) for advice on couplings, retention devices, and accessories for your application.

All dimensions illustrated in this brochure are nominal.

Dixon

Rubber hose

Multi-Purpose Non-Conductive (A104)



Application

Multi-Purpose hose used in steel mills, shipyards, foundries, auto plants and construction industries. For conveying a wide range of media Inc. Air, Water, Oil and other petroleum products.

Temperature Range

-20°C to 100°C

Tube

NBR

Reinforcing

Polyester Braid

Cover

NBR

Special Features

Red, Yellow, Blue and Green covers allow for colour coding where cross contamination of media can affect the safe operation of plant equipment. UV Stabilised; Oil Mist Resistant, Non

Size Range (ID)

4.8mm to 50mm

Steam Hose Wire Reinforced (A230)



Application

Mandrel built high pressure wire reinforced steam hose designed for service with saturated steam in heat control, fire prevention etc, in many industries at maximum pressure of 270 psi.

Temperature Range

-40°C to 210°C.

Tube

Black, smooth, EPDM rubber specially compounded to withstand saturated steam.

Reinforcing

Plies of steel wire cord.

Cover

Red, smooth (wrapped finish), EPDM rubber with excellent resistance to high temperature, weathering and ageing; it is pin-pricked to prevent separation.

Size Range (ID)

12.5mm to 102mm

Petrol/Oil Suction & Delivery Hose (A430)



Application

Specially designed for use on hydraulic systems such as oil return hose; can also be used for suction and discharge of various petroleum products with maximum 30% aromatic content. Used for wet exhaust applications.

Temperature Range

-20°C to 70°C

Tube

Black, nitrile.

Reinforcing

High strength synthetic cord plus wire helix and

Cover

Black, smooth (wrapped finish), synthetic rubber, abrasion, weather and oil mist resistant.

Size Range (ID)

19mm to 102mm

Petrol/Oil Delivery Hose (A450)



Application

Used for transfer on a wide range of petroleum products up to 50% aromatic content.

Temperature Range

-20°C to 70°C

Tube

Black, smooth, NBR conductive tube.

Reinforcing

High strength synthetic cord.anti-static copper wire.

Cover

Black, smooth (wrapped finish), high grade conductive ABR cover.

Size Range (ID)

20mm to 76mm

UHMW Polyethylene Suction & Delivery Chemical Hose (A410)



Application

Chemical transfer hose, suitable for most of the common chemicals.

Temperature Range

-20°C to 100°C.

Tube

UHMW Polyethylene (FDA approval).

Reinforcing

High strength synthetic cord plus embedded steel wire helix and anti-static copper wire.anti-static copper wire.

Cover

Blue, smooth (wrapped finish), EPDM rubber specially compounded for higher resistance to weather, ozone and abrasion.

Size Range (ID)

19mm to 102mm

Heavy Duty Water Suction and Delivery Hose (A210)



Application

Suction and delivery of air, water, waste, mud etc.

Temperature Range

-30°C to 70°C

Tube

NR/SBR

Reinforcing

High strength synthetic cord plus wire helix

Cover

Black smooth (wrapped finish), EPDM rubber, ozone and weathering resistant.

Size Range (ID)

19mm to 300mm

Heavy Duty Water Suction and Delivery Hose (A210) Assemblies



Application

Water suction & delivery assemblies are assembled in house by Dixon's trained hose technicians and can be tailored to suit any application.

Temperature Range

-25oC to 70oC

Tube

Natural and synthetic rubber

Reinforcing

Textile reinforcement and steel wire helix

Cover

Black smooth (wrapped finish), EPDM rubber, ozone and weathering resistant.

Size Range (ID)

76mm to 203mm

* Suitable for suction and open ended delivery. If a pressurised assembly is required, contact dixon.

Material Handling Concrete Placement Hose (A500)



Application

Mandrel built rubber hose engineered for spraying of plaster, grout, gypsum & concrete. Heavy construction resists kinking.

Temperature Range

-40°C to 70°C.

Tube

Black smooth, specially compounded for superior resistance to abrasion, NR.

Reinforcing

High strength synthetic cord.

Cover

NR/SBR blend

Size Range (ID)

50.8mm to 102mm

Concrete Placement Hose (A505)



Application

Used for the placement of concrete to the casting location; its flexible construction allows easy handling & small bending radius; crush & full suction resistant.

Temperature Range

-30°C to 80°C.

Tube

Black, abrasion resistant natural rubber. Abrasion value 70mm 3 DIN53516. Antistatic compound. NR.

Reinforcing

Plies of steel cord.

Cover

NR

Size Range (ID)

50.8mm to 101.6mm

Composite and PVC hose

Petrol / Oil Vapour Delivery Green with Yellow Stripe (code 1000 equivalent)



Application

This anti-static composite hose is designed for suction and discharge use on plant or road/rail tankers with a wide range of hydrocarbons where 100% aromatic resistance is required. The hose construction is exceptionally lightweight and flexible for ease of handling yet remains robust, hard-wearing and cost effective. Electrically resistant to less than 10 ohms, as required by BS 5842 : 1980 clause 6.2. Hose and assembling in accordance with EN 13765 : 2003

Working Pressure

10 bar (150 psi), safety factor 4:1.

Hose Construction

Polypropylene and Polyethylene films and fabrics with GREEN weather-proof and abrasion resistant outer cover with YELLOW stripe wrapped and tensioned between internal and external wire spirals. Inner and external wire spiral, galvanised steel (GG)

Temperature Range

-40°C to + 80°C

Petrol / Oil Vapour Recovery Black with Yellow Stripe (code 1003 comparable)



Application

This anti-static composite hose is designed for suction and discharge use on plant or road/rail tankers with a wide range of hydrocarbons where 100% aromatic resistance is required. The hose construction is exceptionally lightweight and flexible for ease of handling yet remains robust, hard-wearing and cost effective. Electrically resistant to less than 10 ohms, as required by BS 5842 : 1980 clause 6.2. Hose and assembling in accordance with EN 13765 : 2003

Working Pressure

10 bar (150 psi), safety factor 4:1

Hose Construction

Polypropylene and Polyethylene films and fabrics with BLACK weather-proof and abrasion resistant outer cover with YELLOW stripe wrapped and tensioned between internal and external wire spirals. Inner galvanised wire and external aluminium spiral wire.

Temperature Range

-40°C to + 80°C

Blue Medium Heavy Duty Petrol/Oil Suction Hose



Application

Heavy duty oil resistant compound for the suction and delivery of oils, oil slurry, fuels, diesel fuel and light chemicals. Hose is also abrasion and weather resistant.

Temperature Range

-10°C to 60°C.

Tube

Blue NBR/PVC

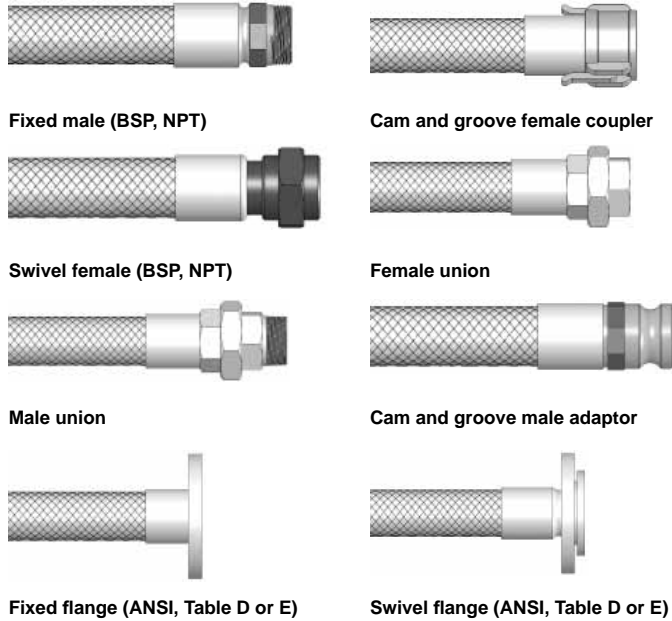
Reinforcing

Light blue rigid PVC helix

Special Features

UV stabilised, abrasion resistant.

Stainless Steel Metallic Hose



Application

Ideally suited to high pressure, high temperature and corrosive applications, flexible metal hoses can accommodate angular movements, temperature expansion, vibration and misalignment. Steam, compressed air, petro-chemical and vacuum.

Temperature Range

-270°C to 600°C

Braiding Material

Braiding material is non-corroding austenitic steel to ISI 304

Hose Material

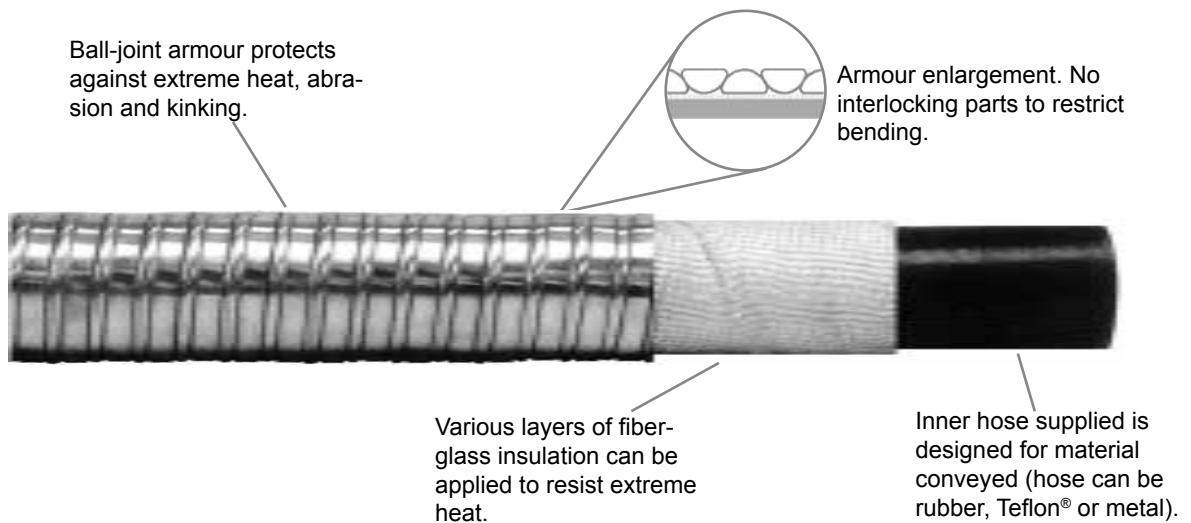
Dixon metal hose is non-corroding austenitic steel according to DIN 17441 (AISI 321)

Size Range (ID)

6mm to 300mm

GSM Ball-Joint Armoured Hose

A flexible connector for demanding service conditions



Features:

- A combination of insulation and GSM exclusive ball-joint armor protects hose from extreme heat, flame, abrasion, molten splash and kinking.
- GSM armour is applied directly over two wraps of insulation, leaving no gap between the armour and the hose.
- The insulation and armour are applied under controlled tension resulting in an integrated union of armor to the hose O.D.

Materials:

- galvanized steel and stainless steel

Sizes:

- ¼" - 12"

Cam and Groove Design Information

Applications

The Dixon Cam & Groove coupling is a reliable quick connect coupling for use on hose, pipe, tubing and tanks conveying a wide variety of liquids, dry bulk materials and vapours including cooling water, fuels, chemicals, cosmetics, food products, adhesives, dyes, pharmaceuticals, pellets and much more.

How does it work

The coupling is connected by simply opening the coupler arms and inserting the adapter into the coupler. The two cam arms are then closed under normal hand pressure to complete the joint.

The Dixon range of Cam and Groove (Camlock) couplers and adaptors are manufactured to interchange with all product produced to Mil Spec A-A 59326, which supersedes Mil-C-27487. No Standard exists for the 1/2" (15mm) & 8" (200mm) fittings and generally these sizes do not interchange with other manufacturers.

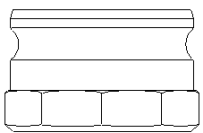
Maximum Pressure Ratings

Designed for use with liquids, consult Dixon for specific recommendations. Recommendations based on the use of mating Dixon fittings at ambient temperature 21°C with standard Buna-N seal installed. For use at elevated temperature or other unusual operating conditions, consult your Dixon representative.

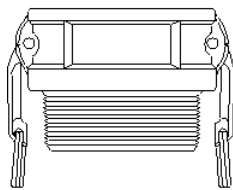
For Aluminium, Bronze, Brass, Stainless Steel & Malleable Camlocks:						
Size mm	15	20-60	65	75	100	125-150
Pressure (psi)	150	250	150	125	100	75

For Polypropylene and Nyglass camlocks:				
Size mm	15-25	32-50	75	100
Pressure (psi)	125	100	75	50

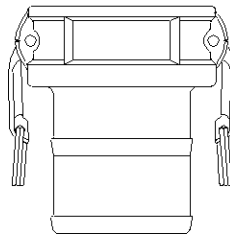
Cam & Groove Line Drawings



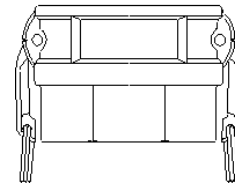
Type A



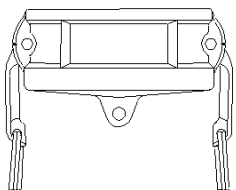
Type B



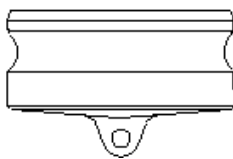
Type C



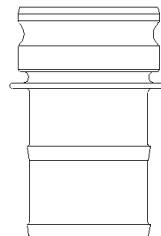
Type D



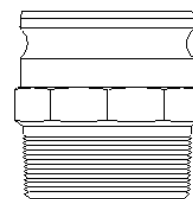
Type DC



Type DP



Type E



Type F

Unlike other safety couplings the EZ Boss-Lock...

- ...is extremely easy to open and ergonomic.
- ...is resistant to accidental disconnection when being dragged.
- ...alerts you if it is not properly engaged - the rotating lever is not flush with the handle.
- ...has no sliding pins to jam - it's rotating action helps keep the locking device free of debris.
- ...has no sliding pins to pop open - is designed to protect critical parts from impact and with stand rugged use.
- ...can be supplied with special shanks custom suited to your needs.
- ...is available with swaged and PF shank designs for hard to couple chemical hoses.
- ...is easier to insert into the hose tubes on Tank Trucks, and is therefore easier to use in restricted spaces due to the smaller maximum OD and a more snag free exterior.
- ...can retrofit the Cam Arm assemblies on to undamaged stainless steel Boss-Locks. This allows you to protect your investment in Stainless Steel Boss-Lock couplings while you upgrade.
- ...is made in the USA.



Type C and E

Swaged & Notched Cam and Groove

Provides a permanently attached cam and groove fitting when superior coupling retention is required

Swaged EZ Boss-Lock Type C Cam and Groove Couplers



coupler x hose shank with ferrule

Features:

- Developed specifically for chemical transport hoses having Crosslinked Polyethylene (XLPE) or Ultra High Molecular Weight Polyethylene (UHMW) tubes. In testing tank transport hoses from a wide variety of manufacturers, the swaged EZ Boss-Lock fittings proved to be the clear winner in overall performance.

Sizes:

- coupler available in ¾" and 1"

Material:

- 316 stainless steel

Notched EZ Boss-Lock Type C Cam and Groove Couplers



coupler x hose shank

Features:

- The notched EZ Boss-Lock system allows you to better manage your inventory. You can stock one coupling and two ferrules, covering the same hose range with less inventory. *You must purchase a fitting and the matching ferrule to create an assembly.*

SAFETY
ALERT

SAFETY
ALERT

- The largest advantage of the notched EZ Boss-Lock design is that the coupling can be removed from a damaged hose by cutting away the ferrule without necessarily damaging the fitting. *After inspection to determine its suitability for reuse, it can be reinstalled into another hose by using a new ferrule.*

SAFETY
ALERT

- *Dixon stems and ferrules are specifically designed to be used together as a coupling system. Due to differences in dimensions and tolerances, for safety reasons, do not use other manufacturer's stems or ferrules with Dixon Holedall products.*



notched ferrule

Sizes:

- coupler available 1½", 2", 3" and 4"
notched ferrule available in 1½", 2", 3" and 4"

Material:

- 316 stainless steel

Stainless steel crimp sleeves for Dixon couplers and adapters are available on the next page.

Swaged Boss-Lock Type E Cam and Groove Adapters

Features:

- Developed specifically for chemical transport hoses having Crosslinked Polyethylene (XLPE) or Ultra High Molecular Weight Polyethylene (UHMW) tubes. In testing tank transport hoses from a wide variety of manufacturers, the swaged Boss-Lock fittings proved to be the clear winner in overall performance.

Sizes:

- coupler available in ¾" and 1"

Material:

- 316 stainless steel



adapter x hose shank with ferrule

Notched Boss-Lock Type E Cam and Groove Adapters

Features:

- The largest advantage of the notched Boss-Lock design is that the coupling can be removed from a damaged hose by cutting away the ferrule without necessarily damaging the fitting. *After inspection to determine its suitability for reuse, it can be reinstalled into another hose by using a new ferrule.*
- The notched Boss-Lock system allows you to better manage your inventories. You can stock one coupling and two ferrules, covering the same hose range with less inventory. *You must purchase a fitting and the matching ferrule to create an assembly.*
- *Dixon stems and ferrules are specifically designed to be used together as a coupling system. Due to differences in dimensions and tolerances, for safety reasons, do not use other manufacturer's stems or ferrules with Dixon Holedall products.*



adapter x hose shank



notched ferrule

Sizes:

- coupler available in 1½", 2", 3" and 4"
notched ferrule available in 1½", 2", 3" and 4"

Material:

- 316 stainless steel

Crimp Sleeves

Features:

- Hose O.D. ranges for crimp sleeves are the same as for Dixon's standard cam and groove notched ferrules.
- *Dixon stems and ferrules are specifically designed to be used together as a coupling system. Due to differences in dimensions and tolerances, for safety reasons, do not use other manufacturer's stems or ferrules with Dixon Holedall products.*
- The crimp sleeve is not designed to be used in applications where the assembly is exposed to high temperatures.



Sizes:

- available in 2" and 3"

Material:

- 304 stainless steel, carbon steel is also available contact the factory for pricing and availability

External

Swage High Pressure Couplings

For services requiring a fitting capable of withstanding extremely high pressures and severe operating conditions

Features:

- For services of extremely high pressure (up to 3,000 PSI) applications such as on small and medium size drilling rigs; used for slim hole, core drill, workover, seismograph, water well, blast or shot holes, etc.
- Long, rugged fittings machined from seamless pipe and tubing with specially designed serrations
- Mating ferrules machined from heavy wall material with matching serrations and rows of set screws ensure better coupling retention
- Couplings are shipped with matching ferrules. To ensure receipt of a properly sized ferrule please provide hose O.D. when ordering. Make sure both ends of the hose are measured for O.D.
- Must be swaged with a 50 Ton, 100 Ton or 350 Ton Ram (page 4)



stem



ferrule

Sizes:

- available in 2", 2½" and 3"

Grade "D"

Rotary Hose Couplings

Independent elevated temperature tested

Features:

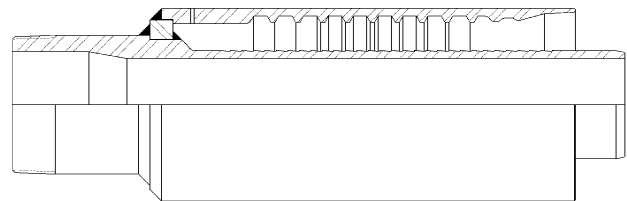
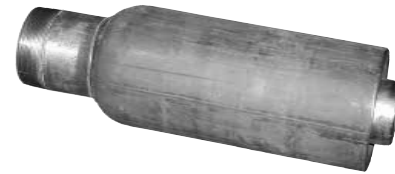
- Complies to API 7K specifications
- Working pressure: 5,000 PSI
- Test pressure: 10,000 PSI
- Independent, elevated temperature tested to 180°F
- 95,000 lb. end pull test
- 15,000 cycle test at full working pressure

Sizes:

- available in 2½", 3" and 3½" ID

End Configurations:

- weld end and API male

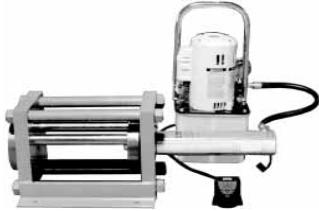


Holedall Coupling Machines

Powerful, finely engineered machines designed specifically to swage and internally expand Holedall couplings by hydraulic pressure.

All Rams require dies of the proper size to reduce the ferrule to the proper diameter for a good grip on the hose. Pushers of the proper size must be used on the end of the Ram to push the Holedall fitting through the die. Die and pusher selection depends on the sizes and types of hoses being coupled. Ferrule recommendations and a Die Chart binder are available upon request. Consult your Dixon representative for specific details.

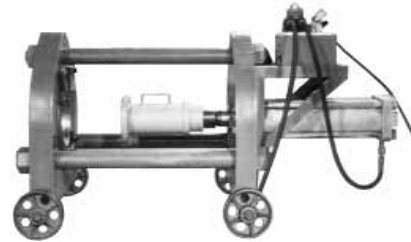
15 Ton Ram



Features:

- Designed for internally expanded couplings only
- Bench mounted model (optional stand available)
- Produces up to 10,000 PSI, for up to 15 tons of ram force
- Expands 1" through 3" steel fittings and 3/4" through 4" brass Holedall petroleum fittings
- Motor is 1/2 h.p., 115 volt, 60 cycle, single phase with foot pedal

100 Ton Ram



Features:

- Swages Holedall fittings to hose from 1 1/4" through 10" I.D.
- With optional accessories, this ram may be used for internally expanded couplings on hose from 1 1/4" through 6"
- Produces up to 100 tons of ram force
- Motor is 1-1/8 h.p., 115 volt, 60 cycle, single phase standard with remote, 220/440 volt motors are available

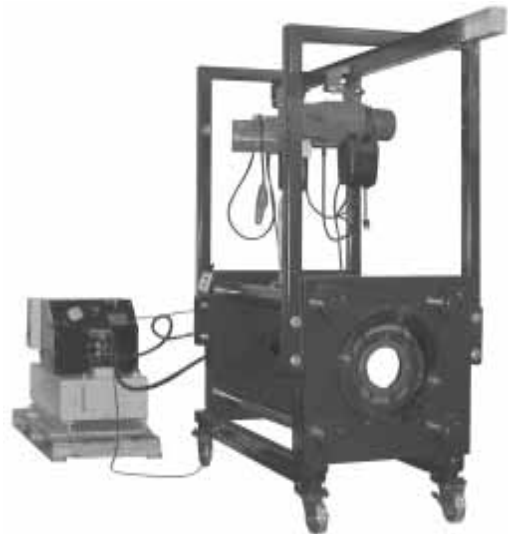
25 Ton Ram



Features:

- Free standing model
- Produces up to 10,000 PSI of line pressure for up to 25 tons of ram force
- Capable of external swaging 1/4" through 4" I.D. hose and internal expanding 5/8" through 4" I.D. hose, with proper equipment
- Motor is 1/2 h.p., 115 volt, 60 cycle, single phase with foot pedal
- High speed pump kit option available

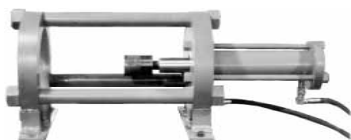
350 Ton Ram



Features:

- Long stroke allows swaging with one pusher, eliminating the need to stop the machine to add extensions
- 354 tons of swaging force ensures the ram will not stall out
- Capable of producing 188 tons of pulling force allowing for internal expansion of fittings
- 10,000 PSI pump with 25 gallon reservoir
- 2 GPM flow rate at 10,000 PSI
- 3-phase motor is 12.5 h.p., 230 volt, 60 Hz, remote is standard

50 Ton Ram



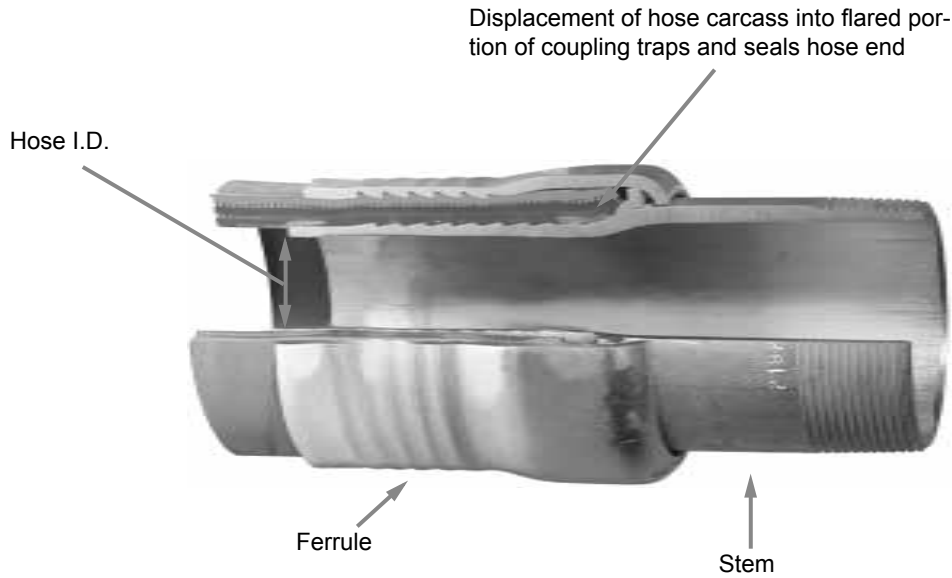
Features:

- Bench mounted model (optional stand available)
- Produces up to 10,000 PSI, for up to 50 tons of ram force
- With proper equipment externally swages 1 1/4" through 6" I.D. hose and internally expands 5/8" through 6" I.D. hose
- Motor is 1-1/8 h.p., 115 volt, 60 cycle, single phase, standard with remote, 220/440 volt motors are available

External

Swage Coupling System

Provides outstanding strength, durability and safety by utilizing a progressive swage



Features:

- Patented Holedall couplings include a Holedall stem and a specially engineered ferrule. The hydraulic swaging of the coupling to the hose is accomplished by pushing the ferrule through a die which reduces the ferrule O.D. The ferrule penetrates the hose wall, providing a 360° uninterrupted compression band around the hose.
- A hydraulic ram is the only piece of machinery necessary to accomplish the coupling. Available in five different sizes - 15, 25, 50, 100 and 350 ton - these rams will accommodate dies and pushers of various sizes so that hoses up to 10" in diameter may be coupled.
- This multi-purpose, high pressure coupling system requires no bolts and results in a clean coupling with no protrusions. The swaging operation is fast and hose of various lengths and different styles can be coupled. Ease of operation, flexibility and economy make the Holedall method an unequalled assembly system.
- Couplings are furnished with pipe thread, plain end, victaulic grooved or flanged ends.
- Dixon Holedall stems and ferrules are specifically designed to be used together as a coupling system. Due to differences in dimensions and tolerances, for safety reasons, do not use other manufacturer's stems or ferrules with Dixon Holedall products.

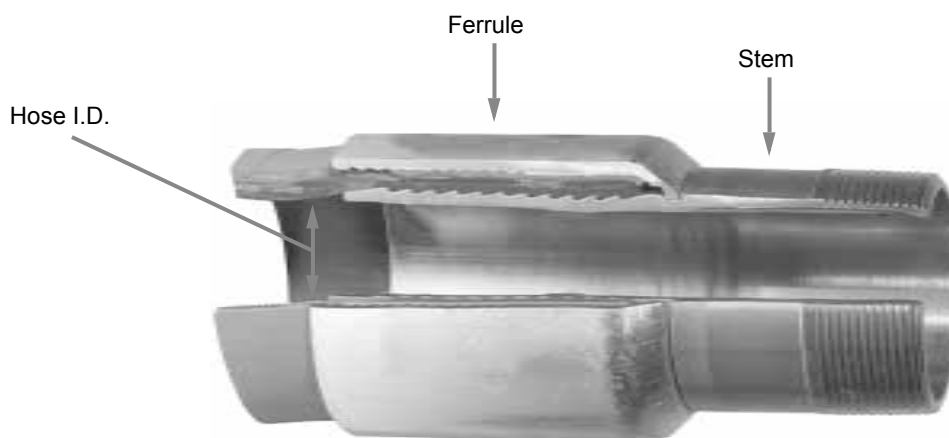
SAFETY
ALERT

Material:

- stainless steel and carbon steel

Internal Expansion Couplings

Essential when maximum flow is important



Features:

- Only one expansion tool is needed for each hose I.D.
- Streamlined, lightweight coupling consists of ferrule and stem, no protrusions to snag on equipment
- Recommended applications for these fittings include: concrete pump hose, plaster and grout hose, oil suction and discharge hose, multi-purpose heavy duty air hose, jetting hose, barge loading hose and bottom loading hose.
- Maximum flow of media
- Reduction of turbulence through hose
- Excellent sealing and retention characteristics
- Outperforms band clamps
- Easy and consistent installation
- Dixon Holedall stems and ferrules are specifically designed to be used together as a coupling system. Due to differences in dimensions and tolerances, for safety reasons, do not use other manufacturer's stems or ferrules with Dixon Holedall products.

SAFETY
ALERT

End Configurations:

- male NPT
- raised California
- victaulic
- other end configurations available on request

Scovill Style

Internally Expanded Couplings

For discharge and suction service

Features:

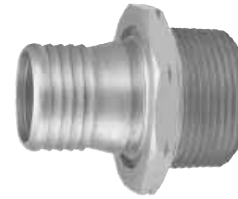
- Commonly used in the fuel transfer industry to homes, airplanes, ships, etc.
- Couplings are compact, light and streamlined to eliminate catching on curbs and shrubs.
- 520-H fittings are designed for internal expansion only
- Couplings are pre-lubricated for assembly
- Hand and electrically operated installation equipment is available. Consult factory for pricing and availability.
- The working pressure of the 520-H fitting varies with the size of the fitting, the size and construction of the hose and the media being conveyed. Consult the factory for recommendations.
- Dixon Holedall stems and ferrules are specifically designed to be used together as a coupling system. Due to differences in dimensions and tolerances, for safety reasons, do not use other manufacturer's stems or ferrules with Dixon Holedall products. **SAFETY ALERT**
- Intended for fuel delivery service
- Both the male and female fittings have octagonal facets for tightening with a wrench. The 1½" and larger size females have special lugs for tightening. Couplings grip hose firmly over a broad area to provide a permanent, trouble-free assembly. The stem is expanded to nominal I.D. of hose for a rigid, uniform, full-flow area.

Material:

- male and female stems machined from bar stock or solid brass forgings
- ferrules are available in brass and stainless steel

Sizes:

- 520-H series available in ¾", 1", 1¼", 1-3/8", 1½", 2", 2½", 3", and 4"
- 520-G series available in 1", 1½", 2" and 2½"



520-H Series male



520-H Series female



520-G Series grooved/victaulic type

Hookie Hook Hose Lifter

For bulk loading or rig supply hose operations in off-shore applications

Features:

- Stems are yellow zinc plated in accordance with BS1706: 1990 as standard, with threads to API standard 5B: 1988
- Internal swage ferrules are available in yellow zinc plated or powder coat finishes in accordance with the UKOOA (United Kingdom Offshore Operators Association) color system
- Hose lifters are supplied with proof load test certificates
- Hose lifters specifically designed for use with bulk loading hose / Hookie Hook stems are also available, contact the factory for additional information

Materials:

- forged steel or aluminum bronze

Sizes:

- available in 3", 4" and 5"



Dixon

Air King Couplings

Air King American Pattern

Materials Available

Malleable Iron ASTM A47, 316 Stainless Steel CF8M, Brass C84400

Seal Materials

Natural Rubber (NR), Neoprene, Viton

Temperature Range

Rubber Seal -29°C to 71°C, Neoprene Seal -29°C to 88°C

Viton Seal -30°C to 200°C

Working Pressure

150 Psi at 21°C

Size Range

3/8" to 1" Hose end and Threaded

Thread Type

Male and Female BSP or NPT



Hose ends

Shanks are long and deeply corrugated.

- Available in malleable iron, brass or 316 stainless steel (5/8" not available in Stainless Steel).
- Available in sizes 3/8" to 1".



Male Ends

- Male NPT thread with hex for a wrench.
- Available in malleable iron, brass or 316 stainless steel (1/4" not available in Stainless Steel).
- Available in sizes 1/4" to 1".
- BSP ends available in malleable iron all other materials in NPT.



Female Ends

- Female NPT thread with hex for a wrench.
- Available in malleable iron, brass or 316 stainless steel (1/4" not available in Stainless Steel).
- Available in sizes 1/4" to 1".
- BSP ends available in malleable iron all other materials in NPT.

Dixon

A Type / Surelock Couplings

'A' Type - Standard SG Iron 500psi

Male BSP
minsup



Female BSP



Surelock Hose End



Features

Standard coupling heads ensure the inter changeability of all sizes, regardless of whether the mating coupling is male, female or hose tail.

Materials Available

SG Iron ISO 1083 Zinc plated, 316 stainless steel CF8M

Seal Material

Natural Rubber (NR), Viton, Nitrile available on request (NBR, Buna N)

Temperature Range

Natural Rubber (NR) seal 29°C to 71°C
Viton seal -30°C to 200°C

Working Pressure

Standard seal 500psi, Bellow seal 1000psi

Compatible with

Atlas copco, Ludecke

Size Range

3/8" to 1 1/4" Hose end and Threaded

Thread Type

Male and female BSP NPT Available on request.

Surelock

Male BSP
minsup



up to
1000
psi

Female BSP



Surelock Hose End



Features

The Surelock Coupling was originally designed and patented by Minsup. It was the first coupling designed specially for 1 1/2" and 2" hoses. The size range currently extends from 3/8" through to 3". They are simple, reliable and provide an airtight connection. This style of coupling excels where speed, ease, economy and safety are paramount.

Materials Available

SG Iron ISO 1083 Zinc Plated AS1789
316 stainless steel CF8M

Seal Material

Natural Rubber (NR)
Viton
Nitrile available on request (NBR, Buna N)

Temperature Range

Natural Rubber (NR) seal 29°C to 71°C
Viton seal -30°C to 200°C

Working Pressure

3/8" to 2" 1000psi 3" 500psi

Size Range

3/8" to 3" Hose end and Threaded, 2" Shouldered

Thread Type

Male and female BSP NPT Available on request.

Boss

Ground Joint Coupling System

Boss couplings are all-purpose hose couplings, universally recommended for steam hose connections.



Service:

- Used for steam, air, water, fluid petroleum and chemicals
- Can be used for liquid petroleum gas up to 1" ID
- Can be applied to many types of rubber, synthetic, plastic, metallic or semi-metallic hose. Consult the factory for specific media capabilities.

Features:

- Positive Metal-to-Polymer Seal - a leakproof seal is formed when the metal head of the stem makes contact with the patented polymer seat in the spud.
- The non-metallic polymer seat resists most chemicals found in manufacturing facilities (reference the Corrosion Resistance chart in the Dixon Price List or on the web at www.dixonvalve.com/resources/cr_chart.php)
- Recommended for steam service up to 450°F
- Easy to seal
- Works with existing ground joint fittings
- Use with Boss clamps on page 23

SAFETY
ALERT

Materials:

- | | | |
|--------------|----------------------------|------------------------------------------|
| | <u>1/4" to 1" include:</u> | <u>1 1/4" to 6" include:</u> |
| • stems: | plated steel | plated iron through 4",
tubular steel |
| • spuds: | plated steel | plated iron |
| • wing nuts: | plated iron | plated iron |

Sizes:

- Available in 1/4", 3/8", 1/2", 3/4", 1", 1 1/4", 1 1/2", 2", 2 1/2", 3", 4" and 6"

Boss Male Stems



brass



iron



steel bar stock

Features:

- Use with Boss clamps on page 23.

Materials:

- steel bar stock, iron, 316 stainless steel, brass

Sizes:

- 1/4", 3/8", 1/2", 3/4", and 1" available in steel bar stock
- 1 1/4", 1 1/2", 2", 2 1/2", 3" and 4" available in iron
- 1/2", 3/4", 1", 1 1/4", 1 1/2", 2", 2 1/2", 3" and 4" available in 316 stainless steel
- 3/4", 1", 1 1/4", 1 1/2", 2" and 3" available in brass

Boss Clamps

Widely used for air, water, fluid, petroleum, steam, chemicals and liquid petroleum

Features:

- The bolts used in the Boss interlocking clamps are not standard bolts. They vary from standard bolts in their length, diameter, overall thread length and material hardness. These bolts can be retorqued, but it is **not** recommended that the bolts or clamps be reused, as they are designed for a single bend only. Dixon recommends using only factory supplied replacement bolts.
- Torque values for clamps are based on dry bolts. The use of lubricant on bolts will adversely effect clamp performance.
- Do not lubricate nuts and bolts
- Refer to page 26-27 for installation and inspection procedures.
- Replacement nuts and bolts are available, contact the factory for more information

**SAFETY
ALERT**

**SAFETY
ALERT**

Materials:

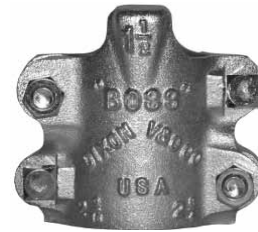
- plated iron, stainless steel, brass, investment cast carbon steel

Sizes:

- 1/4", 3/8", 1/2", 3/4", 1", 1 1/4", 1 1/2", 2", 2 1/2", 3", 4" and 6" available in plated iron
- 1/2", 3/4", 1", 1 1/4", 1 1/2", 2" and 3" available in stainless steel
- 1/2", 3/4", 1", 1 1/4", 1 1/2", and 2" available in brass



2-bolt type



4-bolt type
2 gripping fingers



4-bolt type
4 gripping fingers



6-bolt type
three piece

Dixon

Dry Disconnect Couplings

Connect and disconnect hose and pipelines without accidental spillage and product loss



Service:

- Working Pressure -

aluminum	260 PSI
stainless steel	360 PSI
brass / gunmetal	360 PSI

General Features:

- Easy to handle - push and turn - free flow; turn and pull - closed
- Time saving - no need to drain hoses or pipe systems
- Economical - no loss or spillage of liquids at connection or disconnection
- Safety- the valve cannot be opened until the unit is coupled
- Environment friendly - accidental spillage eliminated
- Safe and reliable - due to rugged construction
- To avoid product contamination caused by connecting a coupler to the wrong adapter, selective versions of the adapters are available. Contact the factory for further information.
- Product life - uncomplicated design and high quality materials ensures longer product life
- Interchanges with Avery Hardoll and Todo-matic®

Sizes:

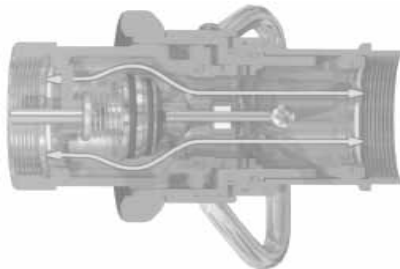
- couplers available in ¾", 1", 1½", 2", 3", 4" and 6"
- dust plugs available in ¾", 1", 1½", 2", 3", 4" and 6"
- adapters available in ¾", 1", 1½", 2", 3", 4" and 6"
- composite dust caps available in ¾", 1", 1½", 2", 3", 4" and 6"
- rubber dust caps available in 1" and 2"

Materials:

- 316 stainless steel, anodized aluminum, brass / gunmetal
- standard seal - Viton®
- optional seals- EPDM, NBR - nitrile, Kalrez®, Chemraz®, Perlast® Viton®

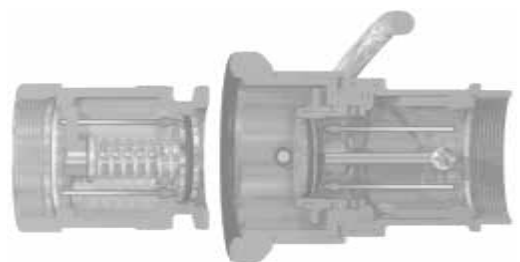
How it works

The principle of operation is identical for all sizes of couplings.



Open:

- Push and turn, it is coupled - *full flow*



Closed:

- Turn and pull, it is released - *no spillage*

DRY DISCONNECT

Cam and Groove Style

Dry Disconnect Couplings

Connect and disconnect hose and pipelines without accidental spillage and product loss



1½" and 2" DBA adapter



3" DBA adapter



1½" and 2" straight coupler



3" straight coupler



90° swivel

General Features:

- Compatible with most cam and groove style dry disconnects
- Spring loaded sealing device designed to "snap" closed should the valve become disconnected with the poppet open
- Contact the factory for chemical compatibility, size, and material selection. Special configurations can be designed for your application.

Adapter Features:

- Two-piece adapter design for easy rebuilding of adapters
- Fully interchangeable with Kamvalok (OPW trademark) style fittings
- Aluminum fittings have aluminum nose piece and brass piston

Coupler Features:

- Dixon EZ Boss-Lock cam arms provide high security from accidental opening due to vibration or snagging.
- Heavy duty stainless steel crank and link provides long service life.
- Dry disconnect coupler has automatic closing poppet assembly
- Stainless steel handle allows product exposure to corrosive chemicals or washdown service
- Strong handle attachment prevents sheared pins and misaligned crank assemblies
- Fully interchangeable with Kamvalok (OPW trademark) style fittings
- Aluminum fittings have stainless steel (corrosion resistance comparable to 304 stainless) internals
- A DBA style adapter (sold separately) is required for the coupler to operate

Sizes:

- couplers available in 1½", 2" and 3"
- adapters available in 1½", 2" and 3"

Materials:

- Stainless steel, aluminum
- adapter seals-
 - Buna
 - Viton®
 - Teflon® Encapsulated Silicone
 - EPT
 - Chemraz®
 - Teflon Encapsulated Viton®
- coupler seals-
 - Buna
 - Viton®
 - EPT
 - Teflon® Encapsulated Silicone and Kelraz®
 - Teflon® Encapsulated Silicone and Chemraz®
 - Teflon® Encapsulated Viton® and Chemraz®
 - Chemraz® and Teflon®

Delrin®, Kevlar®, Teflon® and Zytel® are registered trademarks of E.I. duPont Nemours and Company.
Kalrez® and Viton® are registered trademarks of DuPont Dow Elastomers.

Dixon

Safety Break-away Couplings

Breaking Bolt Series

Designed to minimize spillage and damage associated with drive away and pull-away incidents

Industrial Version



Features:

- Provides passive security against situations where a hose or loading arm could be subjected to inadvertent excessive loads.
- operates independently of shut off safety systems and does not require an external power source.
- High flow / low pressure drop
- Female NPT is standard, optional ANSI / DIN flanges are available.
- Stainless steel or aluminum
- Working pressure stainless steel 360PSI and aluminum 230PSI
- Viton® is standard seal.

Size	Width	Length	Weight in Lbs.		Flow Rate / GPM	DN	Stainless Steel Part #	Aluminum Part #
			stainless	aluminum				
2"	4.5"	7"	5"	3"	200	50	SBC200SS	SBC200AL
3"	6.2"	11"	18"	8"	650	80	SBC300SS	SBC300AL
4"	7.9"	34"	34"	14"	800	100	SBC400SS	SBC400AL

Marine Version



Features:

- Designed to be installed within a hose string where the coupling will have a length of hose attached to both sides
- typical applications include: ship to offshore platform and ship-to-ship product transfer operations.
- coupling automatically senses an excessive load, closes the valves and disconnects
- release is executed when force causes bolts to break
- 316T1 stainless steel body with Viton® O-rings
- Working pressure 360 PSI
- Female NPT, both ends

Size	Width	Length	Weight in Lbs.	Flow Rate / GPM	DN	Stainless Steel Part #
2"	4.5"	7"	5"	200	50	MSBC200SS
3"	6.2"	11"	18.8"	650	80	MSBC300SS
4"	7.9"	34"	34.1"	800	100	MSBC400SS

Hydraulic

Quick Disconnect Couplings

Serving the market for hydraulic and pneumatic coupling sizes of 2" or below.

WS Series Blowout Prevention Couplings



Features:

- Fire tested and Lloyd's certified to 700°C (1300°F) in accordance with API 16D (Certificate #NAO 0601041/1)
- Designed for hazardous area service where couplings are required to operate under fire conditions in an emergency.
- Sleeve is cast using a shell cast method that provides a better surface finish, tighter tolerance control, and excellent repeatability.
- Blowout Prevention Couplings are individually marked with the BOP series designation

Material:

- coupler and nipple: steel, 316 stainless

Sizes:

- available in 3/4", 1", 1 1/4", 1 1/2" and 2"

Performance Specifications	Operating Bar	Pressure PSI	Coupled Burst Bar (PSI)	Flow Rate ΔP=1 Bar	Locking Mechanism
3/4" steel	345	5,000	1,380 (20,000)	157 LPM (40 GPM)	Threaded
1" steel	345	5,000	1,380 (20,000)	227 LPM (60 GPM)	Threaded
1 1/4" steel	345	5,000	1,035 (15,000)	310 LPM (82 GPM)	Threaded
1 1/2" steel	345	5,000	1,035 (15,000)	416 LPM (110 GPM)	Threaded
2" steel	345	5,000	1,035 (15,000)	908 LPM (240 GPM)	Threaded

Oilfield Series

WS-Series Snap-Tite™ 75 Interchange



wrench flats are pictured, non-flat fittings are standard

Features:

- Sleeve is cast using a unique process that provides improved surface finishes, tighter tolerance control and excellent repeatability
- Heavy duty hammer lugs are designed to provide optimum durability during connection and disconnection
- Seals are easily field replaceable, including the valve seal, which can be replaced without replacing the whole valve
- Comply with applicable Det Norske Veritas North Sea standards for coupling applications
- Unique initial-thread profile ensures nipple longevity in the toughest environments

Sizes:

- available in 3/4", 1", 1 1/4", 1 1/2" and 2"

Material:

- coupler and nipple: steel, 316 stainless
- dust plug and cap: aluminum body with steel chain lanyard

Industrial Hydraulic Series

H-Series ISO7241 Series B Interchange



Features:

- Couplers and nipples comply with ISO7241, Series B
- Wide variety of body and seal materials and thread configurations maximize compatibility in a variety of applications
- Large diameter heavy duty knurled sleeves are designed to resist brinneling and maximize performance under impulse conditions

Sizes:

- available in 1/8", 1/4", 3/8", 1/2", 3/4", 1" and 1 1/2"

Material:

- coupler and nipple: steel, brass, 303 stainless, 316 stainless
- dust plug and cap: elastomer body and lanyard
- rigid dust plug and cap: aluminum body, steel ring
- protective pressure cap - steel

Mobile General Purpose Series K / 5600-Series ISO7241 Series A Interchange

Features:

- Couplers and nipples comply with ISO7241 Series A
- Couplers have a high concentration of locking balls to reduce incidents of brinelling during operation
- Heavy duty knurled sleeves are designed to resist brinelling (to create round indentations in a metal surface) and maximize performance under impulse conditions
- Wide variety of thread configurations maximize compatibility in a variety of applications

Sizes:

- available in 1/4", 3/8", 1/2", 3/4", 1", 1 1/4", 1 1/2" and 2"

Material:

- coupler and nipple: steel
- dust plug and cap: elastomer body and lanyard



Wingstyle Series W / 7800-Series Wing Interchange

Features:

- Threaded wing or hex sleeves enable easy connection and disconnection while under pressure
- O-ring connected marker is highly visible during connection, and helps keep contaminants out of the threads while connected
- Coupler has a high flow tubular valve designed to reduce pressure drop and turbulence while improving flow performance
- Bulkhead mounting kits available to secure nipples for simplified connection and disconnection
- Flanged bonded seal prolongs coupling life and is integral in the reduction of spillage and air inclusion

Sizes:

- available in 3/4", 1", 1 1/4" and 1 1/2"

Material:

- coupler and nipple: brass, steel wing nut
- dust plug and cap: brass body with steel chain lanyard
- mounting flange: steel



Flush Face Series HT-Series ISO16028 Flushface Interchange

Features:

- Patented coupler-stem retention system provides optimum performance during surge flow, burst and impulse pressure
- Couplers have a high concentration of locking balls to reduce incidents of brinelling during operation
- Couplings designed to exceed 1,000,000 cycles during impulse testing, making them ideal for hammers
- Heavy duty grooved sleeves are versatile, rugged and ideal for bulkhead mounting
- Wide selection of seal and body materials provides optimum versatility in a variety of applications

Sizes:

- available in 3/8", 1/2", 5/8", 3/4" and 1"

Material:

- coupler and nipple: steel, 316 stainless
- dust cap: elastomer body and lanyard



High Flow Oilfield Flush Face Series ST-Series Snap-tite™ 71 Interchange



Features:

- Design minimizes air inclusion during connection and fluid loss during disconnection
- Heavy duty grooved sleeves provide bulkhead mounting options and reduce instances of brinneling
- Designed to exceed 1,000,000 cycles during impulse pressure conditions
- Couplings comply with applicable Det Norske Veritas North Sea standards for coupling applications
- Available in a wide variety of materials, including high pressure stainless steel configurations upon request

Sizes:

- available in ¾", 1" and 2"

Material:

- coupler and nipple: steel, 316 stainless
- dust cap: aluminum body with steel chain lanyard

DQC - Snap-tite™ Series Interchange V / VH-Series Snap-tite™ H / IH Interchange



Features:

- Couplers and nipples comply with MIL-C-51234
- Couplers have a high concentration of locking balls to reduce incidents of brinneling during operation
- Large diameter heavy duty knurled sleeves are designed to resist brinneling and maximize performance under impulse conditions
- Available in single shut-off, double shut-off, or straight through configurations with a wide selection of end connections

Sizes:

- available in ¼", 3/8", ½", ¾", 1", 1¼", 1½" and 2"

Material:

- coupler and nipple: steel, brass, 316 stainless
- rigid dust plug and cap: aluminum body with steel chain lanyard

DQC - T Series Interchange T / 3000-Series High Pressure Screw-Together Interchange



Features:

- Threaded sleeve allows connection and disconnection while coupler and/or nipple are under pressure
- Urethane seal resists extrusion under high pressure during connection and disconnection
- Interchanges with major brands

Sizes:

- available in ¼" and 3/8"

Material:

- coupler and nipple: steel, 316 stainless
- dust plug and cap: steel body with steel chain lanyard

Ball, Check and Butterfly

Valves (available in NPT and BSP)

For the control of air, water, oil and gas in hose or pipe lines

General Purpose Brass Ball Valve with SS Handle

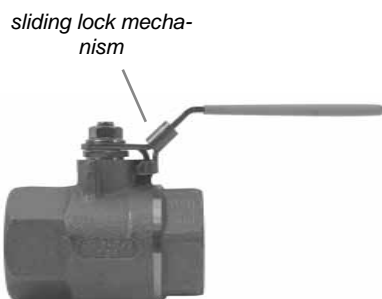


Female BSP x Female BSP

Features:

- Recommended for general use with water, oil and gas
- Full bore, long body series
- Nickel plated brass body with stainless steel handle
- Teflon seat and chrome plated brass ball
- Temp range -10°C to 110°C
- 1/4" to 4" available

Locking Handle Brass Ball Valves



Female NPT x Female NPT

Features:

- For control of air, water, oil and gas in hose or pipe lines, for other services, please contact the factory
- Rated to 600 PSI WOG; 150 PSI steam
- Blow-out proof RPTFE stem
- Chrome-plated brass ball
- Stainless steel sliding lock mechanism secures handle in open or closed position; can be padlocked open or closed.
- 1/4", 3/8" and 1/2" available in full port design
- 3/4", 1", 1 1/4", 1 1/2" and 2" available in standard port design

Brass Ball Valve AGA Approved



Female BSP x Female BSP

Features:

- Recommended for general use with water, oil and gas.
- Full bore, blow-proof stem
- Nickel plated brass body with stainless steel handle
- Teflon seat and chrome plated brass ball
- -10°C to 110°C
- AGA Certified
- 1/4" to 2" available

SS or Bronze "Deadman" Spring Return Handle Ball Valves

Features:

- Rated to 600 PSI WOG; 150 PSI saturated steam
- Vacuum service to 29 inches Hg
- Threaded bronze valve
- Stainless steel lever
- Chromium plated ball
- RTFE seats and stuffing box ring
- Blow-out proof stem design
- Adjustable packing gland
- Spring return to close and open valve
- Operating torque approximately three times standard valve torque.
- ½" available in full port design
- ¾", 1", 1½" and 2" available in standard port design
- Full Stainless steel also available



Female NPT x Female NPT
(BSP ends also available)

3-Way Diversion Ball Valves

Features:

- Bronze body
- Can be used with gasoline and diesel fuel
- Rated to 400 PSI WOG
- Blow out proof stem
- Chromium-plated ball
- RPTFE seats and stuffing box ring
- Stainless steel handle and nut with vinyl sleeve
- Adjustable packing gland
- Female NPT
- ½" available in full port
- ¾" and 1" available in standard port design



Female NPT x Female NPT x Female NPT
(BSP ends also available)

Features:

- Stainless steel body and ball
- Rated to 800 PSI WOG
- Blow out proof stem
- RPTFE seats and stuffing box ring
- Stainless steel handle and nut with vinyl sleeve
- Adjustable packing gland
- Meets NACE MR-01-75
- Female NPT
- ½" available in full port design
- ¾" and 1" available in standard port design

3-Way Diverting Ball Valves

Features:

- Rated to 400 PSI WOG; 100 PSI saturated steam
- Brass body
- Blow out proof stem
- Chrome plated brass ball
- PTFE seats, seals, and thrust washer
- Adjustable stem packing
- Temperature range to 320°F
- Female NPT
- ½", ¾", 1", 1¼", 1½" and 2" available in standard port design



T flow pattern

Female NPT x Female NPT x Female NPT
(BSP ends also available)

Stainless Steel One Piece Ball Valve



Female BSP x Female BSP

Features:

- For use with air water, oil, gas & most chemicals. Locking device standard
- Standard port
- SS 316 body
- PTFE seat
- Pressure 15mm to 40mm rated to 800psi. 50mm rated to 600psi
- 6mm to 50mm available

Stainless Steel Two Piece Ball Valve



Female BSP x Female BSP

Features:

- For use with air water, oil, gas & most chemicals. Locking device standard
- Full bore
- SS 316 body
- PTFE seat
- Pressure 15mm to 40mm rated to 800psi. 50mm rated to 600psi
- 6mm to 50mm available

Stainless Steel Three Piece Ball Valve



Female BSP x Female BSP

Features:

- For use with air water, oil, gas & most chemicals. Locking device standard
- Full bore
- SS 316 body
- PTFE seat
- Pressure 15mm to 40mm rated to 800psi. 50mm to 100mm rated to 600psi
- 13mm to 100mm available

Ball Cone Check Valves



Female NPT x Female NPT

Features:

- For use with water, oil, air lines or inert gases. Not recommended for use on or near reciprocating pumps or other similar *vibration causing machinery*.
- Tight shut-off with liquid media
- No radial alignment necessary
- Straight through and streamlined for minimum change in velocity
- Reinforced TFE check is spring loaded for fast seating action.
- Rated to 400 PSIG WOG, cold non-shock; 125 PSIG saturated steam
- Cracking pressure is .5 PSI
- Temperature range -20°F to 353°F
- 1/4", 3/8", 1/2", 3/4", 1", 1 1/4", 1 1/2", 2", 2 1/2" and 3" available in brass
- 1/4", 3/8", 1/2", 3/4" and 1" available in stainless

3 Piece SS Ball Valve with Pneumatic Actuator

Features

- For use with most fluid applications and air or gas where compatible with valve, body and trim. for dry applications please contact you nearest Dixon branch.
- Female x Female BSP
- Full bore fitted with double acting and spring return actuator
- Direct mounted
- Namur solenoids 5/2
- Available in 1/2" - 4"
- body material SS316
- ISO5211 approved
- Limit switch box and open/close indicators are available as options.



3 Piece SS Ball Valve with Electric Actuator

Features

- For use with water, oil gas and chemicals. Not suitable for dry applications.
- Full bore, 240V AC, 24V AC/DC. Open/Shut only.
- Available in 1/2" - 4"
- Female x Female BSP
- Body material SS316
- PTFE Seats



Wafer Actuated Pneumatic

Features

- Most fluid applications and air or gas where compatible with valve, body and trim. Note: For dry applications contact your nearest Dixon branch.
- Wafer type ISO 5211. Direct mounted, Namur solenoids 5/2
- Available in 2" - 12"
- Wafer table E standard. lugged to table E optional
- Double acting and spring return actuator
- Limit switch box, Namur solenoids and positioners as options



Electric Actuated

Features

- Can also be supplied for regulating with a 4-20Ma modulating controller. Not suitable for dry applications. Open/Shut only.
- Wafer Table E standard, Lugged to Table E optional.
- Available in 2" - 12"
- Cast Iron, SS Trim, EPDM Seat body
- 240V AC, 24V AC/DC actuator



Cast Iron / Ductile Iron Butterfly Valves

NOT RECOMMENDED FOR STEAM SERVICE

Pictures are representative, different size valves have different hole patterns.

Threaded Lug Style with bronze or SS disc

Features:

- For use between two 150 lb. flanges
- Will lock "open" or "closed"
- Rated to 200 PSI
- Ductile iron body, ASTM A126, class B
- Aluminum bronze disc, ASTM B148, ALY.954
- Buna-N seal and stem seals
- Available with Buna N and EPDM liners
- PTFE bushing
- Stainless steel top and bottom stems
- Available in 2", 3", 4" and 6"



Wafer Style with bronze or SS disc

Features:

- For use between two 150 lb. flanges
- Will lock "open" or "closed"
- Rated to 200 PSI
- Ductile iron body, ASTM A126, class B
- Aluminum bronze disc, ASTM B148, ALY.954
- Buna-N seal and stem seals
- Available with Buna N and EPDM liners
- PTFE bushing
- Stainless steel top and bottom stems
- Available in 2", 3", 4" and 6"



Wafer Style with stainless disc

Features:

- For use between two 150 lb. flanges
- Will lock "open" or "closed"
- Rated to 200 PSI
- Ductile iron body, ASTM A126, class B
- Stainless steel disc, ASTM A351, GR. CF-8M
- Buna-N seal and stem seals and liner
- PTFE bushing
- Stainless steel top and bottom stems
- Available in 2", 3", 4" and 6"



Dixon

Refueling Nozzles

Automatic Shut-Off



Application

For card lock and truck refuelling stations

Design

Venturi type auto shut-off. Detachable trigger ratchet

Material

Aluminium body, Bronze trigger

Flow Rate

80gpm flow (requires min 7.5 gpm for auto shut-off)

Max Pressure

50 psi

Pressure Nozzles for Bulk Delivery



Application

Manual operation (non-auto) for high pressure

Design

Easy opening dash pot design with shockless closing. Detachable trigger ratchet, packing gland and seal

Material

Bronze trigger with aluminium body and spout

Flow Rate

Flow to 80 gpm

Max Pressure

50 psi

Overwing Aircraft



Application

Manual operation (non-automatic) for high pressures

Design

Easy opening dash pot design with shockless closing. Detachable trigger ratchet, packing gland and seal. Aluminium spout has cap with spring cord and a fine mesh stainless steel screen filter. Screw attachment for grounding cable

Material

Aluminium body, bronze trigger with plastic guard pad to protect wing

Flow Rate

Flow to 80 gpm

Max Pressure

50 psi

Large Capacity Low Pressure/ Gravity Nozzle



Application

Rugged utility nozzle for low pressure/gravity applications.

Design

Rapid flow due to 1¼" oversized design.

Material

Aluminum body, spout and trigger, buna seal

Max Pressure

25 psi

Large Capacity Low Pressure/ Gravity Nozzle



Application

Gravity feed fuel delivery

Design

Aluminum body, Viton seal

Pressure

Gravity feed only



NOTE: Some fuel additives are not compatible with certain materials. Please contact Dixon for fuel compatibilities.

Dixon Hammer Unions

Color coded connectors for temporary pipe and flow line installations



100 Series

100 Series

Features:

- Used on low pressure manifolds and lines and in applications running air, water, oil or gas up to 1,000 PSI NSCW (non-shock cold working pressure)
- Yellow sub, black nut

Sizes:

- available in 2", 2½", 3", 4", 6" and 8"

200 Series

Features:

- Used in general service applications running air, water, oil or gas up to 2,000 PSI NSCW (non-shock cold working pressure)
- Grey sub, blue nut

Sizes:

- available in 1", 1½", 2", 2½", 3", 4" and 6"

206 Series

Features:

- O-ring mounted sub provides excellent sealing properties
- Runs air, water, oil or gas up to 2,000 PSI NSCW (non-shock cold working pressure)
- Grey sub, blue nut

Sizes:

- available in 1", 1½", 2", 2½", 3", 4" and 6"

602 Series

Features:

- Lip type seal ring minimizes fluid flow turbulence while creating a pressure seal
- For use in mud, manifold service and truck mounting applications running air, water, oil, gas or mud up to 6,000 PSI NSCW (non-shock cold working pressure)
- Orange sub, black nut

Sizes:

- available in 1" and 2"

1002 Series

Features:

- Lip type seal ring minimizes fluid flow turbulence while creating a pressure seal
- For use in high pressure systems and truck mounting applications running air, water, oil, gas or mud up to 10,000 PSI NSCW (non-shock cold working pressure)
- Blue sub, red nut

Sizes:

- available in 1", 2" and 4"

1502 Series

Features:

- Lip type seal ring minimizes fluid flow turbulence while creating a pressure seal
- For use in extreme high pressure applications running air, water, oil, gas or mud up to 15,000 PSI NSCW (non-shock cold working pressure)
- Red sub, blue nut

Sizes:

- available in 2"

Note: Butt weld and socket weld configurations and other materials are available, contact the factory for further information.

Dixon

Swivel Joints

Full 360° rotational movement offers the maximum in flexibility

General Features:

- Wide spacing between dual ball bearing raceways ensures greater load-bearing capacity
- Precision-machined design ensures alignment and years of trouble-free service
- O-ring dust seal protects ball races and seal chamber from all outside elements
- Radius elbow design ensures a smooth flow pattern

O-Ring Style Features:

- The O-ring pressure seal ensures a leak-proof seal at either high or low pressure and smoother rotation at lower torques than multiple seal designs.
- Spring-loaded Teflon® pressure seals are available up through 3".
- Carbon steel and stainless steel O-ring type swivels provide greater strength and corrosion resistance when needed for lower torque applications.

V-Ring Style Features:

- The spring-loaded triple V-ring sealing system ensures a leak proof seal at either high or low pressure and an extended seal life compared to the conventional single O-ring design.
- The 3" - 8" carbon steel swivels are manufactured from carbon steel with flame hardened dual raceways for greater load bearing capacity and longer life.
- The stainless steel swivels are manufactured in 316 grade stainless steel for superior corrosion resistance.
- Available with pressure ratings to 1,000 PSI

Materials:

- V-ring type: carbon steel, stainless steel, aluminum
- O-ring type: carbon steel, stainless steel, aluminum, brass and iron

Sizes:

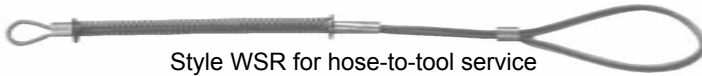
- V-ring type available in 2", 3", 4", 6" and 8"
- O-ring type available in 1", 1¼", 1½", 2", 3" and 4"



Oilfield Accessory Products

Additional accessory products offered by Dixon

King Safety Cables



Style WSR for hose-to-tool service



Style W for hose-to-hose service

Service:

- When hose, couplings or clamps fail, or there is an accidental separation of the assembly, King safety cables minimize injuries to operators and damage to equipment. King safety cables reach across the hose fittings to provide standby safety for hose.

Styles:

- WSR for hose-to-tool service; W for hose-to-hose service; other cable options are available, contact the factory for additional information

Gauges



Brass Liquid-Filled



Stainless Liquid-Filled



Stainless Panel Builder



FlutterGuard™ Dry

Service:

- Applications include those on pumps, hydraulic and pneumatic systems, compressors, machine tools and many other installations where it is necessary to have a gauge with a non-corrosive movement.

Styles:

- Dry, contractor pressure, liquid filled, compound, welding, panel builder and vacuum gauges

Materials:

- stainless steel, brass, ABS plastic cases

Filters, Regulators and Lubricators



Series 1 - Coalescing Filter



Wilkerson
- High Flow
Regulator



Watts
- Standard
Lubricator

Service:

- Rugged, reliable air preparation systems protect your pneumatic equipment

Styles:

- Compact, standard and miniature

Straub Couplings

Joins like or dissimilar pipe materials: steel, galvanized, painted, stainless steel, thin-wall stainless steel, PVC, copper

Grip-L Pipe to Pipe Couplings

Service:

- EPDM sealing sleeve: temp. range - 4°F to 176°F (-20°C to 80°C)
- Not for steam or refrigerant service



Features:

- Requires no special tools or pipe-end preparation; only a torque wrench is required for a secure and safe pipe connection that seldom needs retightening. Reusable.
- Absorbs vibration, water hammer, and sound
- Particularly suitable for pipes within the lower pressure range
- Special patented grip ring for superior holding power on hard-surfaced pipes
- Built to ASTM 1476, Type 2, Class 2 specifications
- Applications include, but are not limited to: shipbuilding, water and waste water treatment plants, and industrial process pipework.



Specifications:

- casing: AISI 316Ti
- screws: AISI 316 L
- U-bolts: AISI 316 Ti
- anchoring ring: AISI 301

Materials:

- Component parts: 316 Ti stainless steel, *elastomer liner*
- Sealing sleeve: EPDM standard (NBR and Viton® A¹ are also available, contact the factory for additional information)

Sizes:

- Available in 1½", 2", 2½", 3", 4", 5", 6" and 8"

Open-Flex 1L Couplings

Service:

- EPDM sealing sleeve: temp. range - 4°F to 176°F (-20°C to 80°C)

Features:

- Requires no special tools or pipe-end preparation; only a torque wrench is required for a secure and safe pipe connection that seldom needs retightening.
- Straub Open-Flex couplings do *require the pipes to be properly anchored and restrained* as they are *not pull-out resistant* like the Straub Grip-L couplings
- Absorbs vibration, water hammer, and sound
- Built to ASTM 1476, Type 2, Class 3 specifications
- Acts as an expansion joint; will accept up to .25" of axial movement

Specifications:

- casing: AISI 316Ti
- screws: AISI 4135 steel
- bolts: AISI 12L 14 galvanized

Materials:

- Component parts: 316 Ti stainless steel, 4135 steel, 12L 14 galvanized
- Sealing sleeve: EPDM

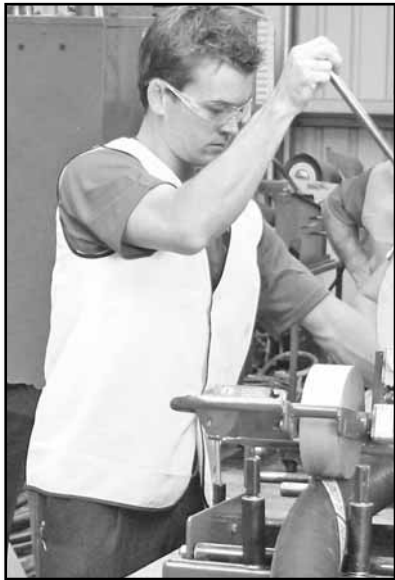
Sizes:

- Available in 1½", 2", 2½", 3", 4", 5" and 6"





Dixon Valve & Coupling Company have been at the forefront of industrial hose fitting and assembly technology for almost 100 years. The experience, along with a commitment to research and development has seen the release of many quality products. Brands such as Dixon Boss, Minsup, Holedall, Flow Chief and Bayco have become industry standard and recognised worldwide.



With the introduction of Holedall swaging systems, hose fitting and testing equipment into Dixon Asia Pacific branches throughout Australia, we can now manufacture a wide variety of specialty hose assemblies and provide industrial hose fitting services.

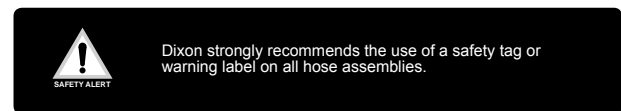
Hose fitting centres have been established in Perth, Sydney, Melbourne, Adelaide, Mackay and Brisbane and are geared to deliver a high level of service and expertise. These service centres have been developed to manufacture quality fitted assemblies, utilising the latest technology to provide innovative solutions to the industrial hose market.

Hose Centres Equipped with:

- Internal Swaging
- External Swaging
- Crimping Machines
- Auto Banding
- Test Tanks
- Test Pumps
- Wire Whip Machines

Value Added Services:

- In House Hydrostatic Pressure Testing
- Hose Assembly Identification and Database Logging
- On Site Hose & Fitting Safety Audits



WARNING

- Worn-out hose fittings should be replaced.
- Loose clamps on hose can be dangerous.
- Bolt type clamps should be retensioned regularly.
- For extra safety, retaining devices such as clips, chains or cables must be used.

When fabricating and specifying hose assemblies, ask the following questions:

Size

What is the ID (inside diameter) of the hose? What is the OD (outside diameter) of both ends of the hose? What is the overall length of the assembly required?

Temperature

What is the temperature range of the media (product) that is flowing through the hose assembly? What is the temperature range of the environment that surrounds the outside of the hose assembly?

Application

How is the hose assembly actually being used? Is it a pressure application? Is it a vacuum (suction) application? Is it a gravity flow application? Are there any special requirements that the hose assembly is expected to perform? Is the hose being used in a horizontal or vertical position? Are there any pulsations or vibrations acting on the hose assembly?

Media

What is the media/material that is flowing through the hose assembly? Being specific is critical - check for abrasive materials, chemical compatibility, etc.

Pressure

What is the maximum pressure including surges (or maximum vacuum) that this hose assembly will be subjected to? Always rate the maximum working pressure of your hose assembly by the lowest rated component in the system.

Ends

What couplings have been requested by the user? Are they the proper fittings for the application and hose selected?

Dixon

Dixon recommends that all assemblies be permanently marked with the designed working pressure and intended media, based on the hose, fittings and attachment method used. Do not use other manufacturers fittings or ferrules with Dixon products due to the differences in dimensions and tolerances. Dixon recommends all hose assemblies be tested frequently.

Misapplications or misuse:



Damage to Hose Cover – The hose cover protects the reinforcement of the hose from damage. If the reinforcement, which provides the hoses pressure rating is exposed or damaged affects the WP of the hose and may lead to failures when pressurised. Damaged hose should be removed from service and repaired or replaced.



What's under the tape? – The use of duct tape or rags to hide defects or patch leaks should be discontinued. It could be hiding a potential hazard. Any damaged or leaking hoses should be removed from service and repaired or replaced.



Hose Tail Insertion – A hose assembly, in order to be completely safe and functional, must have the tail of the coupling fully inserted into the square cut end of the hose. Failure to correctly do so may result in premature failure of the assembly which has the potential to cause damage to plant and personal.



Incorrect use, worn fittings and clamps can cause serious injury

On-Site Safety Audit

Dixon in partnership with your industrial hose supplier is pleased to offer a Hose and Coupling Safety Survey of your plant at no cost to assist your efforts to make your facility as safe, efficient and productive as possible.

Today, plant safety is an enormous, ongoing endeavour in which it is impossible to be an expert in every field. The use of damaged or misapplied hose couplings and related items occurs. To the untrained eye these hazards may continue to exist until an accident happens, threatening not only plant machinery but also the well-being of plant personnel.

Dixon's program includes a visual inspection of hose assemblies and related accessories in your plant by trained technicians. A professionally written report containing observations and recommendations for corrective action is provided to augment your own ongoing safety program. If desired, photographs of the areas of concern can be supplied with the report. As a follow-up, the program offers an educational hands-on seminar directly relating to the safety concerns in your facility.

Plant safety is coming under increasing scrutiny by various regulatory agencies. Let Dixon's trained personnel assist you to establish and maintain safety compliance in your plant.

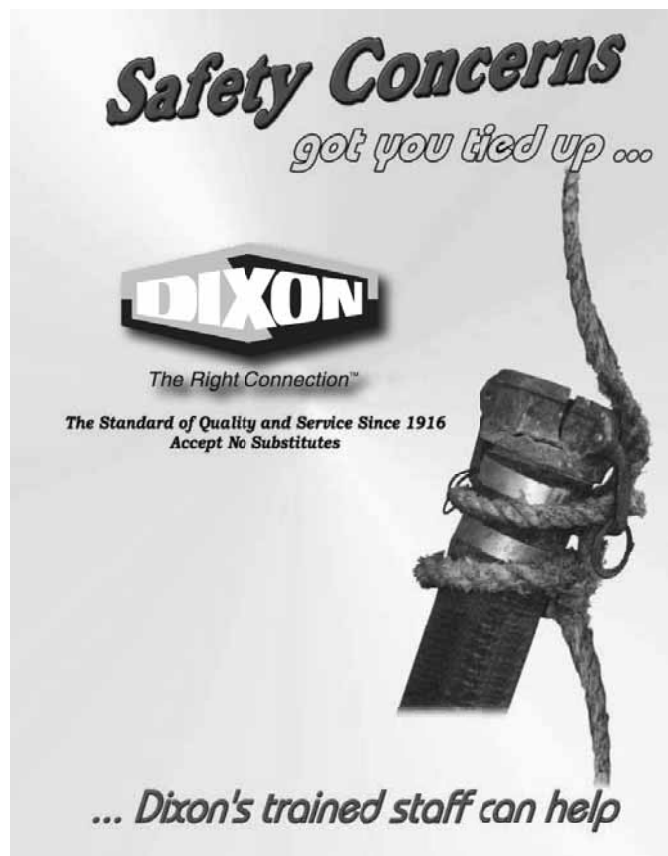
The safety survey report is completely confidential and will only be shown to authorised plant personnel. Again, there is no cost to you for this service. For more information contact Dixon on 1300 134 651.

Hose Coupling Workshops

In an effort to provide customers with information regarding the proper and safe methods of assembling hose and couplings, Dixon offers Hose Coupling Workshops suitable for a company's sales force and shop personnel.

Classes consist of lectures and/or "hands-on" demonstrations of coupling selection, hose preparation, coupling installation, assembly testing and maintenance procedures. Morning, afternoon and all day classes are available.

For more information contact Dixon on 1300 134 651.





The Right Connection™

Dixon's Engineering Department is a valuable resource in ensuring the best possible solution is found for your requirements.

Whether it be industrial hose and fittings, mining equipment, piping systems and valves, wash down equipment, fire suppression products, chemical compatibility or product design and development, Dixon engineering can advise on the correct equipment for your application.

Among the services our Engineers perform are:

Working with distributors and end users to identify new product opportunities and improve existing products.

Investigate and provide solutions to customers' specialised requirements including high temperature and pressure applications.

Development of new products to meet the changing requirements of industry, aiming to reduce downtime and increase product life span.

Product testing to destruction for special applications to ensure adequate safety margin is allowed for.

Ongoing inspection and testing of Dixon products to ensure continued reliability and compliance to relevant standards.

Industrial hose assembly and fire hydrant assembly design and testing to ensure compliance to relevant standards.

For more information please contact your local Dixon branch.



QLD Mackay

38 John Vella Drive
Paget QLD 4740

Phone (07) 4952 5588
Fax (07) 4952 5922

QLD Brisbane

6 Union Circuit
Yatala QLD 4207

Phone (07) 3807 1415
Fax (07) 3807 1843

NSW Sydney

1018 Canley Vale Road
Wetherill Park NSW 2164

Phone (02) 9604 0399
Fax (02) 9604 0952

WA Perth

46-48 Wittenberg Drive
Canning Vale WA 6155

Phone (08) 9455 4993
Fax (08) 9455 4983

China

Dixon (Shanghai) Trading Co., LTD

Room 203
Building 3, No. 1000 Xiechun Road
Jiading District
Shanghai PRC 201804

Phone +86 021 6089 9980
Fax +86 021 6992 2177

Vic Melbourne

2/110-116 Fitzgerald Road
Laverton North Vic 3026

Phone (03) 9369 0622
Fax (03) 9369 0644

SA Adelaide

(SA sales dept)

170 Francis Road
Wingfield SA 5013

Phone (08) 8202 6060
Fax (08) 8202 6096

TAS Hobart

14 Chesterman Street
Moonah TAS 7009

Phone (03) 6273 3007
Fax (03) 6273 3009

Singapore

River Place
62 Havelock Road
Apt #09-07
Singapore 169659

Phone +65 8428 0237
Email aprentice@dixonvalve.com.au

India

Dixon Asia Pacific Private Limited

No. 11, Udyog Bhavan
Sonawala Road
Goregaon (E)
Mumbai 400-063 India

Phone +91 22 2686 2226
Fax +91 22 2685 4748
Email salesindia@dixonvalve.com.au



The Right Connection™

1300 134 651

enquiries@dixonvalve.com.au

Dixon (Asia Pacific) Pty Ltd

170 Francis Road • Wingfield SA 5013
PO Box 2491 • Regency Park SA 5942
Phone +61 8 8202 6000
Fax +61 8 8202 6099
www.dixonvalve.com.au